

# In Focus: Security Situation

Citizens and the PNTL all agree that the security has improved in their area compared to one year ago.

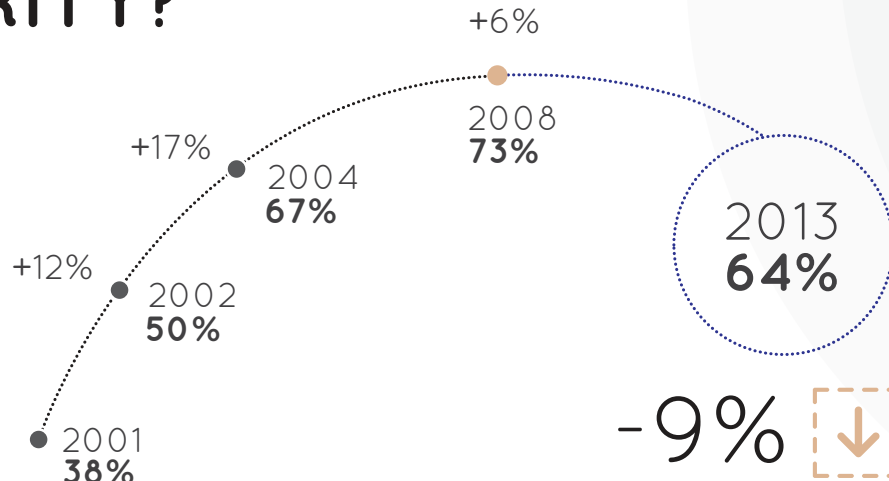
Rates of insecurity remain high, but have fallen for the first year since 2001.

2013 Timor-Leste  
Community-Police Perception Survey Brief

# HOW IS THE SECURITY SITUATION IN YOUR LOCALITY AND HOW CONCERNED ARE YOU ABOUT YOUR SECURITY?

## ✓ IMPROVEMENT

Rates of insecurity remain high, but for the first time since 2001 citizens who report being "somewhat" and "very" concerned about their safety has dropped.



Most citizens and PNTL agree that security has improved in the past year.

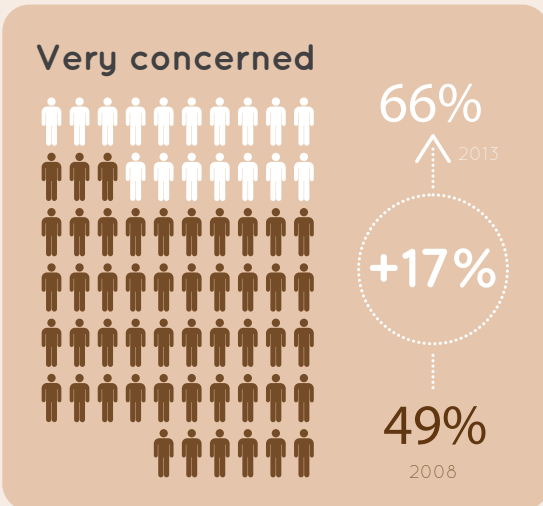


How concerned are you about your safety in your locality?

How would you describe the security situation in your locality compared to the previous year?

## COMMUNITY LEADERS >

Even though overall feelings of insecurity are falling in the general public, instances of significant insecurity is increasing.



## "IMPROVED"

91%

PNTL

85%

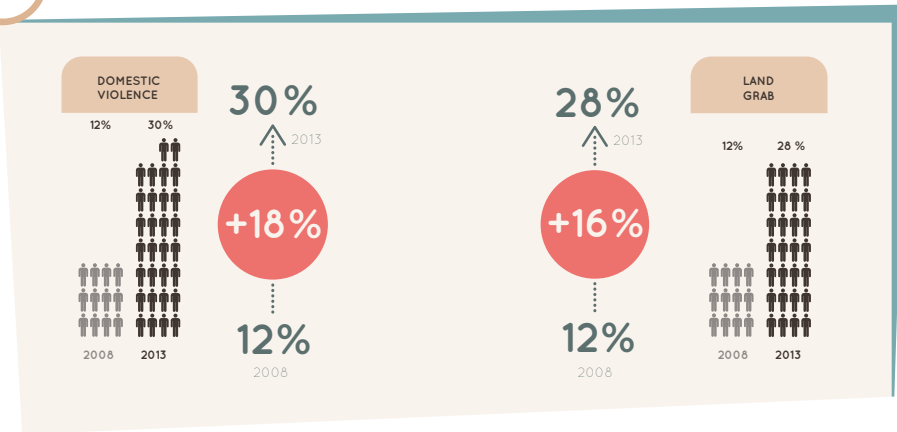
Community Leaders

72%

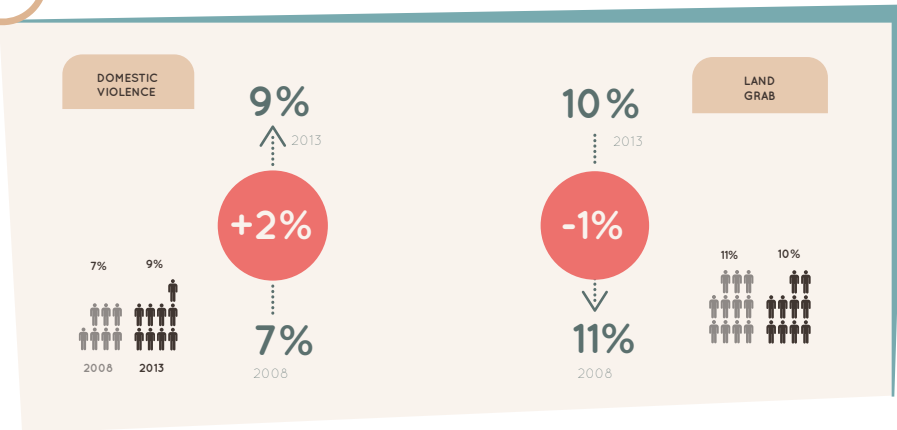
General Public

# What CRIMES have you, or a family member, experienced in the past year?

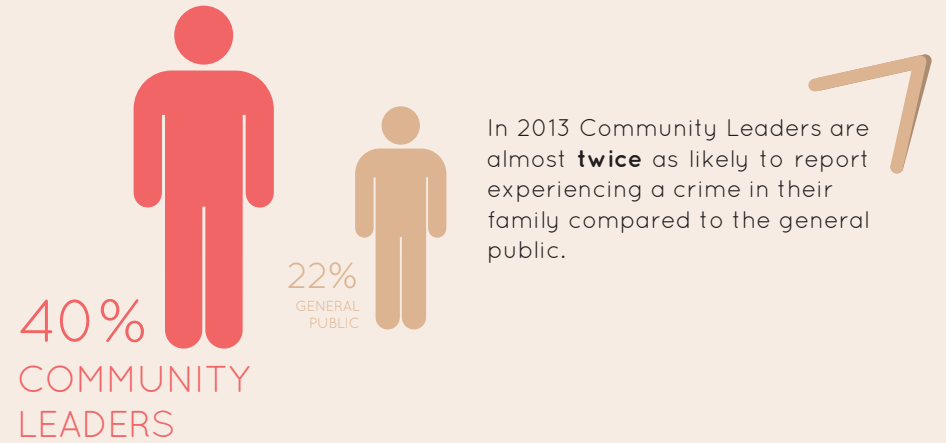
## COMMUNITY LEADERS



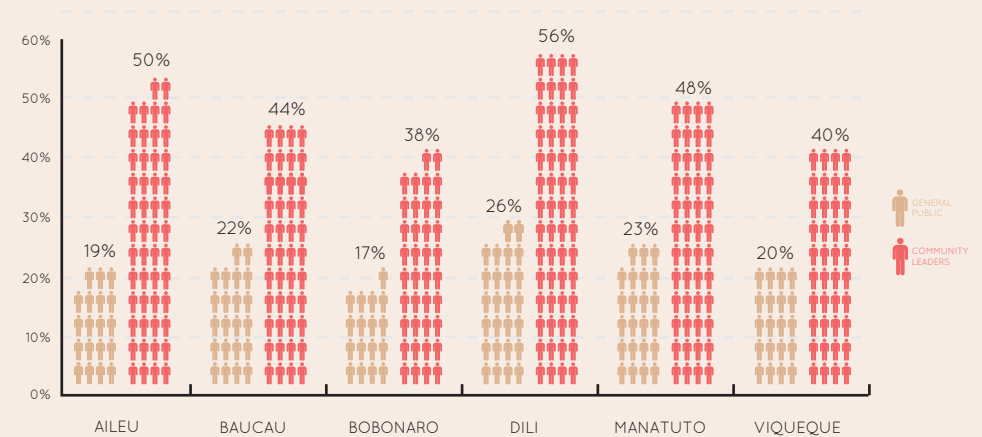
## GENERAL PUBLIC



! "DOMESTIC VIOLENCE" and "LAND DISPUTES" remain the top crimes experienced followed by "ATTACKS LEADING TO INJURY" and "RAPE".



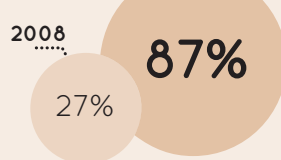
All six target districts recorded **higher reported crimes** by Community Leaders compared to the general public. **Dili District** continues to record the **highest percentage of crimes** for both the general public and community leaders.



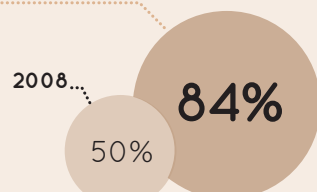
# Decrease in the activity of Martial Arts Groups

There has been a marked **decrease** in the perceived activity of Martial Arts Groups since 2008 for all respondent groups on a national level.

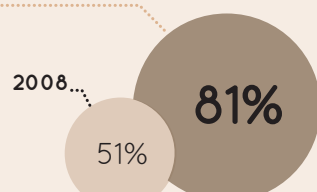
**PNTL**  
MAGS "NOT ACTIVE"



**COMMUNITY LEADERS**  
MAGS "NOT ACTIVE"



**GENERAL PUBLIC**  
MAGS "NOT ACTIVE"



# What do you think is the greatest security threat in your area?

**48% say  
"NO PROBLEMS"**



Despite high levels of insecurity, 48% of the General Population did not name a specific security problem in their locality. However...



Both Community Leaders and the General Public feel that the greatest security threat to their communities is "Land Grab". While the PNTL overwhelmingly indicated "Domestic Violence" as the biggest security problem in their area of work.

## Community-Police Perception Survey Briefs

The survey brief series was developed based on data collected for the report “A Survey of Community-Police Perceptions in Timor-Leste 2013.” Between March and May 2013, The Asia Foundation conducted the second nationwide survey of community-police perceptions in Timor-Leste interviewing 3,106 citizens across all 13 districts (general public=1,891; community leaders=467; PNTL=748).

At a 95% confidence interval, the overall margin of error for the national sample of general public respondents is 2.25%, for community leaders 3.12% and for PNTL respondents 2.78%

The 2013 survey aims to generate empirical data to establish baselines and measure change in community-police relations and perceptions of security over time. It is hoped this information will be used to provide a basis for designing and evaluating activities aimed at increasing security and stability through strengthening community-police cooperation.

The full survey can be accessed online at: [www.asiafoundation.org](http://www.asiafoundation.org) or a hard copy can be requested from The Asia Foundation Office in Timor-Leste.

For more information please contact:

Todd Wassel  
Director- Safety and Security Programs  
[todd.wassel@asiafoundation.org](mailto:todd.wassel@asiafoundation.org)