

MAWIU 2

DARU MAGAM AHKANG AYA HPE MUNGHPAWM KAW NA MUNGDRAW NI DE LATA GALAI YA AI MASA (DECENTRALISATION), AHKUN HKANSE LEN YA AI MASA (REVENUE TRANSFERS) HTE MUNGCHYING WUHPAWNG BAWNGRING MASA (SOCIAL DEVELOPMENT)

Mawiu 2

DARU MAGAM AHKANG AYA HPE MUNGHPAWM KAW NA MUNGDRAW NI DE LATA GALAI YA AI MASA (DECENTRALISATION), AHKUN HKANSE LEN YA AI MASA (REVENUE TRANSFERS) HTE MUNGCHYING WUHPAWNG BAWNGRING MASA (SOCIAL DEVELOPMENT)



NDAI MAWJU HTA LAWMA NA LAM NI

- 1 Ya yang na masa hpe yu jang fiscal decentralisation hpe gara hku mai jai lang sa wa na?
- 2 Fiscal decentralisation hte seng nna ya yang tatut gumhkawng nga ai lam ni gaw hpa ni rai kun?
- 3 Mungchying bawngring lam (human development) hte langai hkrai hkam la lu ai shang gumhpraw lapran na shai hkat ai hte seng nna dinglik yu nga ai lam ni gaw hpa ni rai ta?



NDAI MAWJU HTA LAWM AI GASI GANGAU LACHYUM NI

CAPITAL EXPENDITURE

Laning mi hta na hkam na arung arai ni hta arang bang ai lam (gsd, mawdaw):. Hpyen arai ni a jai gumhpraw hta lai nna Asuya htingnu nta ni hpe gram ai, mazing ai jai gumhpraw ni.

CAPITAL REVENUE

Jak rung jak rai dut ai kaw na shang ai gumhpraw, Asuya nre ai mung shawa kaw na shang ai gumhpraw, maigan na garum ningtum hkan na shang ai shang gumhpraw.

DECENTRALIZATION

Ginjaw magam dap ni a lit ni hpe mungdaw tsang de na rung ni hpe ta tut hparan hpareng sa wa ai lam hta dawdan lu na ahkang aya hpe lahpa galai ya ai masa rai nga ai. Raitim ja gumhpraw pru/shang lam hte seng nna tsep kawp wang lu wang lang hparan hpareng sa wa mai na ahkang aya hpe tsun mayu ai nre.

DECONCENTRATION

Ginjaw magam dap ni a lit ni hpe mungdaw tsang de na rung ni hpe ta tut hparan hpareng sa wa ai lam hta dawdan lu na ahkang aya hpe lahpa galai ya ai masa rai nga ai. Madung yaw shada lam gaw Munghpawm a dawchyan hku nna nga nga let Mungdaw/Ginra na mungchying shawa ni hte grau ni htep wa lu na matu rai nga ai.

NDAI MAWJU HTA LAWM AI GASI GANGAU LACHYUM NI

EQUALIZATION PAYMENTS

Munghpawm Asuya hku nna Mungdaw/Ginra Asuya ni a shang gumhpraw hpe sharap shara ya na hte shawa mu gun ai lam hta hkrat ang ai ja gumhpraw ni hpe sharap sharap shara ya na matu hkam ya ai ja gumhpraw hpe tsun mayu ai.

FISCAL DECENTRALIZATION

Fiscal Decentralisation ngu ai gaw Mungdaw/Ginra Asuya ni hpe jai gumhpraw hte seng ai shang gumhpraw hte seng ai lit lamang ni hpe ap ya ai masa hpe ngu mayu ai. Nhprang sut rai ni hte seng nna Munghpawm Asuya ni hku nna Mungdaw/Ginra Asuya ni hpe grau mai hparan hpareng sa wa lu na matu ahkaw ahkang jaw ai masa (sh) shanhte hpe sut masa hkrang lanyet ni rai nga ai sut masa masing gran ai lam, budget jahkrat ai lam, ginra shang gumhpraw, Munghpawm kaw na Mungdaw de len ya ai lam hte hkoi shap ya ai masa ni hpe jai lang let tsep kawp hparan hpareng lu na matu ahkaw ahkang jaw ai masa re.

PER CAPITA REVENUES

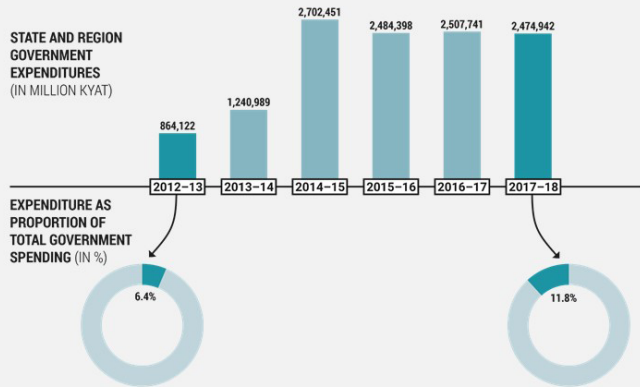
Masha hkum dingdekshagu garan hkam la lu ai shang gumhpraw (revenue).

REVENUE SHARING

Ahkun hkanse kaw na rai rai ahkun hkanse nre ai kaw na rai rai lu wa ai shang gumhpraw na daw chyen mi hpe Munghpawm, Mungdaw hte buga Asuya ni lapran garan jai lang ai masa.

MUNGDAW/GINRA NI A JAI GUMHPRAW RAWT JAT WA AI LAM

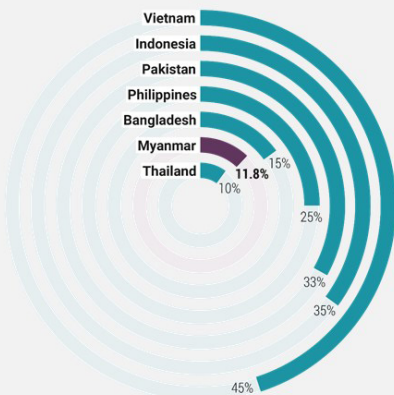
STATE AND REGION
GOVERNMENT
EXPENDITURES
(IN MILLION KYAT)



2012-13 shaning gaw M/G ni Munghpawm kaw na laksan tinghkrai bajet jai hparan lu ai shaning re. Jai gumhpraw gaw lap wan 864,122 kaw na 2012-13 to lap wan 2,474,942, 2017-18 hta du mat ai. Tsahtam shadang 6.4% kaw na 11.8% de rawt mat ai.

M/G 14 hta mung shawa langai a matu a lap 50,000 daram lu jai ai masa nga ai.

M/G NI A JAI GUMHPRAW: KAGA MUNGDAW NI HTE DINGDAW JANG GRAI YAWM AI



Mungdaw/Ginra ni a jai gumhpraw hpe ja gumhpraw jat ya ai hku sha nre, Munghpawm Asuya a jai gumhpraw tsa hta shadang gambum hku nna mung shajat ya ai masa hku rai jang M/G buga tsang na mungchying shawa ni ra ai

Ja gumhpraw hku nna jat ya tim Mugdan ting jai gumhpraw a tsa hta shadang gambum hku njat ya ai majaw M/G ni a jai gumhpraw gaw Asia Mungdan ni hte dingdaw jang grai naw nem nga ai.

Mahta ai: Adapted from Minoletti 2016; International figures (2009) taken from Dickenson-Jones, De, and Smurra 2015, 44; Myanmar figure (2017/18) from Union Citizen's Budget and MOPF data.

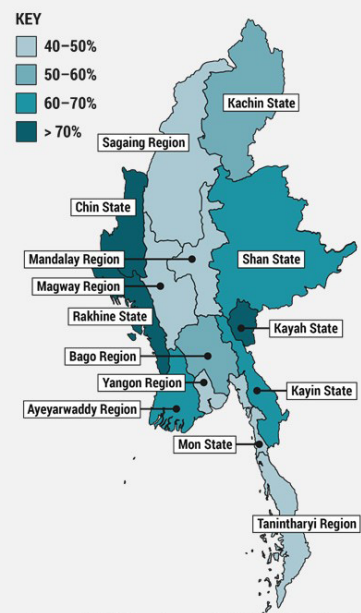
ASIA DAN KAGA MUNG DAN NI HTA BUGA ASUYA NI A JAI GUMHPRAW

Nepal a buga Asuya Act (1999)	Bangladesh Munghpawm Parishad Act (2009)	Kerala Mungdaw- India Mungdaw buga Asuya Act (1994)	Cambodia a Commune & Sangkhat uphkang upade (2001)
Mare bawngring komiti (avg. pop. 10,000)	Union Parishads (avg. pop. 27,000)	Gram Panchayats (avg. pop. 25,000)	Communes (avg. pop. 8,000)
<ul style="list-style-type: none"> • Lu hka • Lawu tsang jawng arung arai ni • Ningpawt ninghpang hkamja lam arung arai ni • Mare lam • Mare madin 	<ul style="list-style-type: none"> • Mare lam hte hka hkawng • hkahtung, hka chyup jak, hka dum hte hka nawng • Hka madin hte maza len hka hkawng • Lam wan 	<ul style="list-style-type: none"> • Ma shalet, lawu tsang jawng kaji hte lahta tsang jawng kaji ni • Tsi dum hte tsi rung • Mare lu hka, lang hka • Maza seng ai • Shaw nam dum hte hka shin gawk • Tsi jaw gawk 	<ul style="list-style-type: none"> • Mare lam hte mahkrai ni • Mare lu hka, lang hka • Mare hka madin • Lawu tsang jawng arung arai ni • Ningpawt ninghpang hkamja lam arung arai ni

MUNGDAW/GINRA NI HTA GINLAWM BAJET KAW NA ARANG BANG JAI GUMHPRAW JAHPAN GAMBUM

FY 2016/2017

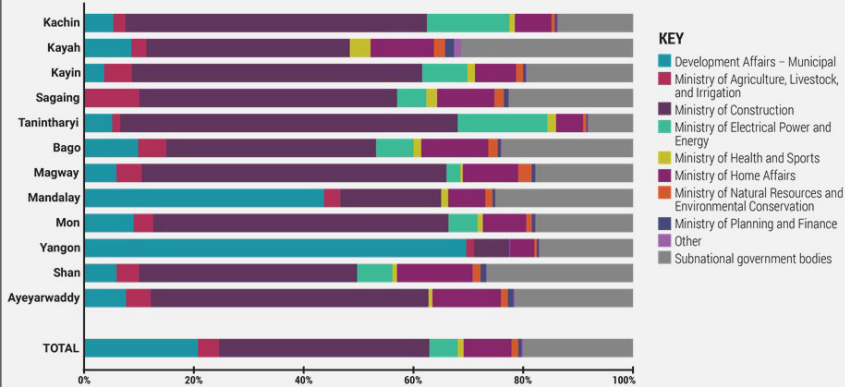
M/G ni hta ram ram shai hkat nga ai. (Mon kaw 40% , Kayah kaw 70%).
Mungaw ni a jai jahpan hta arang bang jai gumhpraw gaw 36% 2013-14 ning kaw na 55% 2016-17 dalam rawt mat sai..



MUNGDAW/GINRA NI A SHANG GUMHPRAW GAW GRAU GRAU NNA SHAI HKAT NGA AI HPE MU LU AI

FY 2016/2017

MUNGDAW/GINRA NI JAI GUMHPRAW HPE MAGAM DAP NI LAPRAN GARAN AI GAMBUM



M/G ASUYA JAI GUMHPRAW NI GAW GRAU NNA LAMANG LAW LAW HTA JAI WA AI

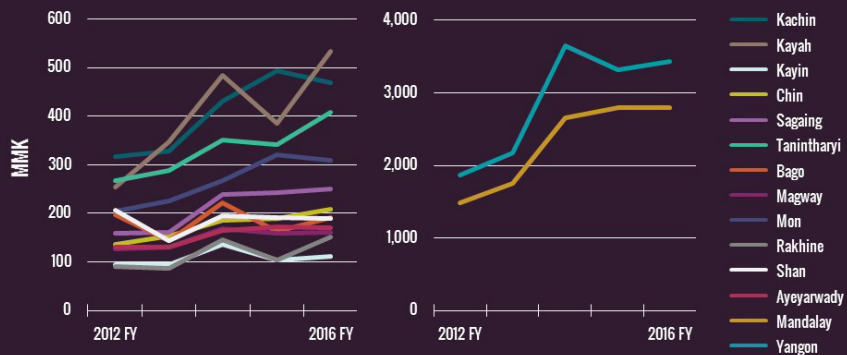
- Gawgap Magam Dap a lawm maw hte mahkrai gawgap ai bajet gaw M/G ni a matu FY 2013/14 hta 54% re ai kaw na FY 2016/17 hta 38% de hkrat mat ai.
- Ndai hku yawng mat ai a marang M/G Asuya hku nna kaga lawnglam ni hta jai mai na ginjang ni hpe mu mada masai. Dai rai nna M/G 12 hta 2013-14 shaloi Myi hprap wan hte seng nna jai gumhpraw bajet hpa nnga ai kaw na 2016-17 shaloi 5% de rawt mat sai; Tanintharyi Ginra hta 16% daram lung mat ai.
- Jai gumhpraw bajet ni hpe malawng gaw M/G kabinet rung hta jahkrat ai rai nna, shawa jai gumhpraw hpe naw shajat na matu hpaji jaw mai nga ai.

AHKUN HKANSE LEN YA AI VS TINGHKRAI SHANG GUMHPRAW (KYAT WAN)

- Munghpawm hku nna Mungdaw de ahkun hkanse len ya ai ladat masum nga ai: **bunghkup grant len ya ai, ahkun hkanse shang gumhpraw garan gachyan ai, hte bawngring fund**
- Bunghkup grant len ya ai lam gaw Munghpawm kaw n Mungdaw ni de len ya ai kaba dik ai fund re
- 2012-2013 kaw n 2017-18 du hkra M/G ni a shang gumhpraw gaw 273% daram rawt mat ai (htam masum daram). FY 2017/18 hta bunghkup grant gaw M/G yawng a shang gumhpraw a 69% daram re
- Gsd, Jinghpaw Mungdaw hta FY 2013-14 e Mungdaw ting jai gumhpraw a 60% gaw tinghkrai shang gumhpraw rai nna FY 2017/18 e gaw 4.8% sha nga mat ai.
- Dai re ai majaw M/G ni a tinghkrai shang gumhpraw sharawt lu na atsam shajat ya ai lam hte dai zawn galaw na matu n gun jaw njaw ngu ai hpe san yu ra na zawn rai nga ai.

MYUNISIPE HTE MUKLUM BAWNGRING KOMITI AHKUN HKANSE HTA SHINGGYIN AI LAM

DAO (MYUNISIPE) HTE CDC* LANGAI HKRAI HTA HTA SHINGGYIN LA AI AHKUN

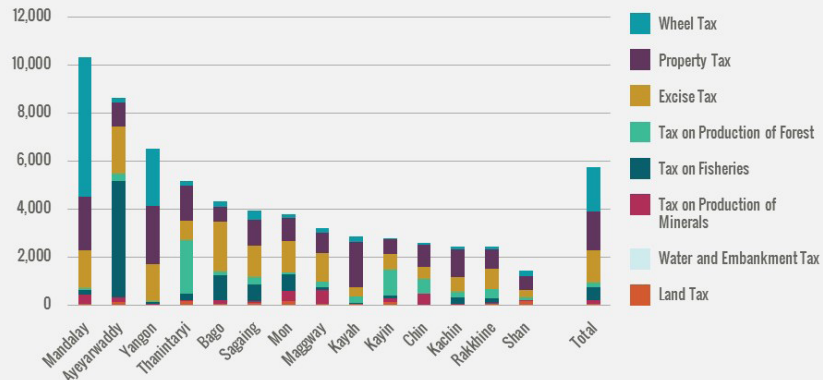


*City Development Committees (CDC) are present in Yangon and Mandalay.

GABAW HTA HKAN NNA JAHPAN HTA AI

MUNGDAW HTE GINRA YAWNG

MUNGDAW/GINRA BUGA TSANG NA AHKUN (LANGAI HKRAI, 2016-17 BE)

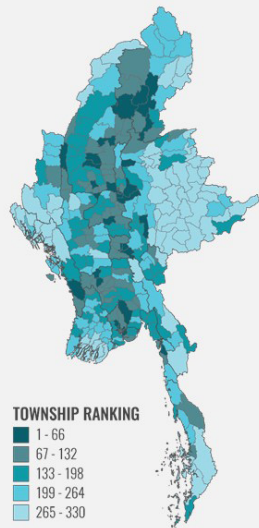


NINGHTAWN NI A BAWNGRING JAHPAN

M/G NI A BAWNGRING LAM HPE SHEN YU AI LAM

DIVERSE HUMAN DEVELOPMENT ACROSS MYANMAR'S TOWNSHIPS

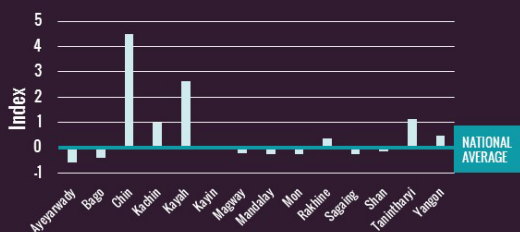
- Ninghtawn tsang bawngring rawt jat wa ai jahpan hpe 2014 masha jahpan na mungchying rawt jat lam hte seng ai shadawn jit na ni hpe la kap ai.
- Ndai hta nga sat nga tsa tsang, hkamka lam hte hpaji tsang ni hpe sawn shalawm ai. Grau chyang ai nsam ni hte madun da ai ninghtawn ni gaw Myen Mung hta bawngring rawt jat dik ninghtawn ni rai nna grau hpraw ai nsam nga ai ni gaw bawngring lam naw hphang hkrat ai ninghtawn ni rai nga ai.



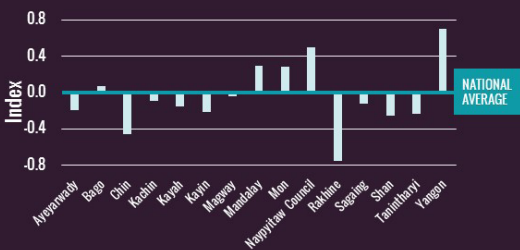
LANGAI HKRAI NA SHANG GUMHPRAW HTE BAWNGRING LAM SHAI AI LAM

** Ngasat ngasa tsang jahpan galaw ai shaloi dum nta a nga sat nga sa byin da ni rai nga ai hka san lu hka lu ai lam, myihprap wan lu ai lam, ndai na arung arai ni- radio (sh) lagaw leng zawm re madu ai lam ni hpe sawn shalam dingdaw yu ai.

PER CAPITA REVENUE INDEX*



STANDARD OF LIVING INDEX**



* State and Region per capita revenue divided by average per capita revenue

LANGAI HKRAI A SHANG GUMHPRAW HTE BAWNGRING LAM SHAI HKAT AI LAM

Mungdaw Ginra ni hta langai hkrai a shang gumhprap grai shai hkat nga ai

M/G langai hkrai a shang gumhprap hpe yu yu jang masa hku nna Mungdaw ni hpe lachyen lahka galaw da ai lam nga ai.

Dai hte maren bawngring lam hta mung shai hkat ai lam hpe mu lu ai

Langai hkrai a shang gumhprap gaw M/G ni a bawngring ai hte seng nna ra ai lam hpe n madun ya nga ai.



GINJAW JUMTEK MASA NLANG AI AHKUN HKANSE MASA (FISCAL DECENTRALISATION) HPE DINGLIK YU AI LAM

- Myen mung a uphkang lam hpe bai gram sharai ai lam gaw **ginjaw jumtek masa nlang ai masa** (decentralisation) ngu na hta magum lit ni hpe **ginjaw hta sha gumhpawn da ai masa nlang ai masa** (deconcentration) masa maga grau shanang nga ai hpe mu lu ai.
- Deconcentration masa hpe shawng na ninggam langai hku nna sawn yu jang nshut na re.
- Raitim ndai ninggam hta ginjaw jumtek uphkang hkrang shayawm masa tsang hta mu lu mai ai lit la lit hkam ai lam hta naw gawng kya na re.

DECENTRALIZATION:

Ginjaw magam dap ni a lit ni hpe mungdaw tsang de na rung ni hpe ta tut hparan hpareng sa wa ai lam hta dawdan lu na ahkang aya hpe lahpa galai ya ai masa rai nga ai. Raitim ja gumhpraw pru/shang lam hte seng nna tsep kawp wang lu wang lang hparan hpareng sa wa mai na ahkang aya hpe tsun mayu ai nre.

DECONCENTRATION:

Ginjaw magam dap ni a lit ni hpe mungdaw tsang de na rung ni hpe ta tut hparan hpareng sa wa ai lam hta dawdan lu na ahkang aya hpe lahpa galai ya ai masa rai nga ai. Madung yaw shada lam gaw Munghpawm a dawchyan hku nna nga nga let Mungdaw/Ginra na mungchying shawa ni hte grau ni htep wa lu na matu rai nga ai.

GINJAW JUMTEK MASA NLANG AI AHKUN HKANSE MASA (FISCAL DECENTRALISATION) HPE DINGLIK YU AI LAM

- Mungdaw/Ginra ni a magam dap hte shanhte a hpaga yumga hpung ni gaw Munghpawm Magam Dap ni a daw chyen ni raitim (DAO/Department of Development Affairs hta lai nna) Munghpawm Asuya kaw na len ya ai garum ningtum ni hta grai naw manoi ra nga ai masa hpe mu lu ai.
- DAO ni gaw Myen Mung a ginjaw jumtek masa nlang ai masa (decentralisation) a ga shadawn hku nna madi madun yang nshut na re. Buga ginra a ra ai lam hta hkan nna shanhte hkrai shang gumhpraw a matu hta shingyin la lu nna shanhte jahkrat da ai budget hpe shanhte jai na ahkang nga ai (hkamja lam hte hpaji lam nre ai sha ninghtawn hte seng ai lam ni hpe tsun mayu ai.) Shanhte lit la lit hkam ra ai gaw Mungdaw/Ginra Asuya hpe re.
- Yawng bunghkup nna yu ga nga jang "Mungchying Wuhpawng (social union) hte seng jang Munghpawm Asuya malawng daw hparan hpareng nga ai hpe mu lu ai.



DAOs are accountable to State and Region governments



LAWNGLAM MADUNG NI HPE GINCHYUM DAT AI LAM

- Mungdaw/Ginra ni a jai gumhpraw law htam wa ai lam gaw Munghpawm Asuya kaw nna len ya ai garum ningtum (grant) ni a majaw re.
- Ningpawt ninghpan wut wahpang ni a matu arang bang jai lang gumhpraw (capital expenditure) gaw grau jat wa ai hpe mu lu nna gabaw law law hta jai lang nga ai hpe mu lu ai (gsd. Mungdaw/Ginra Asuya hpung ni, gawgap, myihprap wan, nhprang sut rai, ninghtawn myunisipe (municipalities).
- 2011 kaw na hpang ai Myen mung a uphkang lam hpe bai gram sharai ai lam gaw ginjaw jumtek masa nlang ai masa (decentralisation) ngu na hta magum lit ni hpe ginjaw hta sha gumhpawn da ai masa nlang ai masa (deconcentration) masa maga grau shanang nga ai hpe mu lu ai; Mungdaw/Ginra ni hku nna mung Munghpawm len ya ai garum ningtum (grant) ni hta madung machyu ra nga ai masa hpe mu lu ai.
- Munghpawm Asuya hku nna Mungchying Wuhpawng (social union) hpe naw gawgap la ra ai ngu ai gabaw hta lakap nna ahkun hkanse hte seng ai lit ni hte hparan hpareng sa wa ai lam ni hta naw jum tek nga ai masa naw re.
- Lit la lit hkam ai lam grau ngang kang wa na matu ginjaw jum tek masa nlang ai masa (decentralisation) hpe grau n-gun jaw ra na rai nna dawdan lu na ahkang aya hpe Mungdaw/Ginra ni de garan ya ra na rai nna Mungchying shawa dawtsa a ra ai lam hte maren rai ra na.

CHYAM DINGLIK YU AI LAM

- Ninggam 1 Bawngring lam hte shang gumhpraw shai hkat ai lam hpe dinglik yu na
- Ninggam 2 **YAWNG SHANGLAWM LET BAWNGBAN NA** – minit 10
