

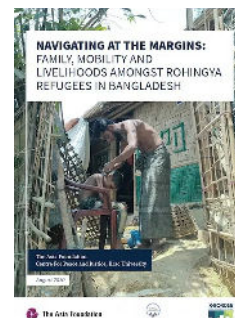


The Rohingya Crisis along the Myanmar–Bangladesh border

Since 2018, The Asia Foundation has led research on the social, political and economic conditions faced by Rohingya refugees in Cox’s Bazar, Bangladesh. Together with local partner the Centre for Peace & Justice, BRAC University, the Foundation produces original qualitative and quantitative data and analysis, while working closely with Rohingya and host communities to highlight their experiences and knowledge. By focusing on issues that are difficult to study or commonly overlooked, the research and analysis supports development and humanitarian actors and policymakers to better respond to the context on the ground.

Navigating at the Margins: Family, Mobility and Livelihoods Amongst Rohingya in Bangladesh

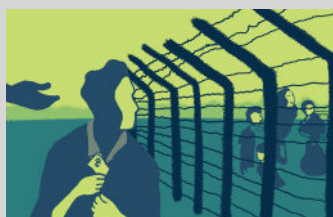
The report describes the many ways that individuals and families living in refugee camps in Bangladesh cope with hardship and life in displacement. It uses information collected through a representative household survey and interviews with Rohingya to examine family separation, livelihood challenges and indebtedness, and the gendered impacts of displacement and economic hardship. Facing mass atrocity crimes in Myanmar and marginalisation in Bangladesh, Rohingya navigate this precarious environment through informal employment and small businesses, remittances, marriage, and in some instances by seeking to migrate to third countries for a better future for themselves and their families.



Additional publications from The Asia Foundation

- Emerging Marketplace Dynamics in the Rohingya Refugee Camps of Cox’s Bazar, Bangladesh
- Community Perspectives on Access to Civil Justice after Cross-Border Displacement: The needs of Rohingya Refugees in Bangladesh
- Views of Rohingya Refugees: Engagement and Experiences with Humanitarian Agencies in Cox’s Bazar, Bangladesh
- Perceptions of Rohingya Refugees: Marriage and Social Justice After Cross-Border Displacement
- Community-Driven Approaches to Research in Contexts of Protracted Crisis

Rohingyastories.org



While undertaking data collection for policy-focused products, researchers engaged closely with hundreds of individuals and families living in Cox’s Bazar refugee camps. This website is a narrative collection adapted from interviews, capturing personal stories of their migration journey and experience in the camps. These stories offer an important personal perspective on events and issues that form the basis of policy discussions around the humanitarian response.

The Asia Foundation’s Rohingya research is supported by the UK government through the Cross-Border Conflict: Evidence, Policy and Trends (XCEPT) programme.



<https://xcept-research.org/regions/south-asia-and-southeast-asia/>