



Australian Government



The Asia Foundation



Photo Credit: Mekong Safeguards

MEKONG SAFEGUARDS PROGRAM

Promoting Sustainable and Inclusive Infrastructure

The Mekong Safeguards Program targets to improve environmental and social safeguards policies, standards, and practices to minimise negative impacts of infrastructure development projects in Cambodia, Lao PDR, Thailand, and Vietnam.

The program works with regional organisations, governments, the private sector, and civil society to promote sustainable, climate-resilient, and inclusive infrastructure in the energy, transport, and water sectors.

The Program is supported by the Australian Government through the Mekong-Australia Partnership and implemented by The Asia Foundation.

WHY ENVIRONMENTAL AND SOCIAL SAFEGUARDS MATTER

Sustainable infrastructure development is critical for the Mekong subregion’s long-term economic growth and environmental resilience. Proper application of environmental and social safeguards in infrastructure development projects in the Mekong subregion contributes to the preservation of habitat and biodiversity, the protection of the livelihoods of communities, and the advancement of social inclusion among vulnerable and marginalised groups in local decision-making processes.

WITH SAFEGUARDS



Projects are safer for people and nature, and resilient to climate change



Communities, women and marginalised groups are consulted and consistently engaged



Long-term sustainability is prioritised



SUSTAINABLE INFRASTRUCTURE

Embedding strong environmental and social safeguards into the development of energy, transport, and water infrastructure.



CLIMATE RESILIENCE

Integrating climate resilience into policies, standards and practices for infrastructure planning, design and implementation.



REGIONAL COLLABORATION AND ALIGNMENT

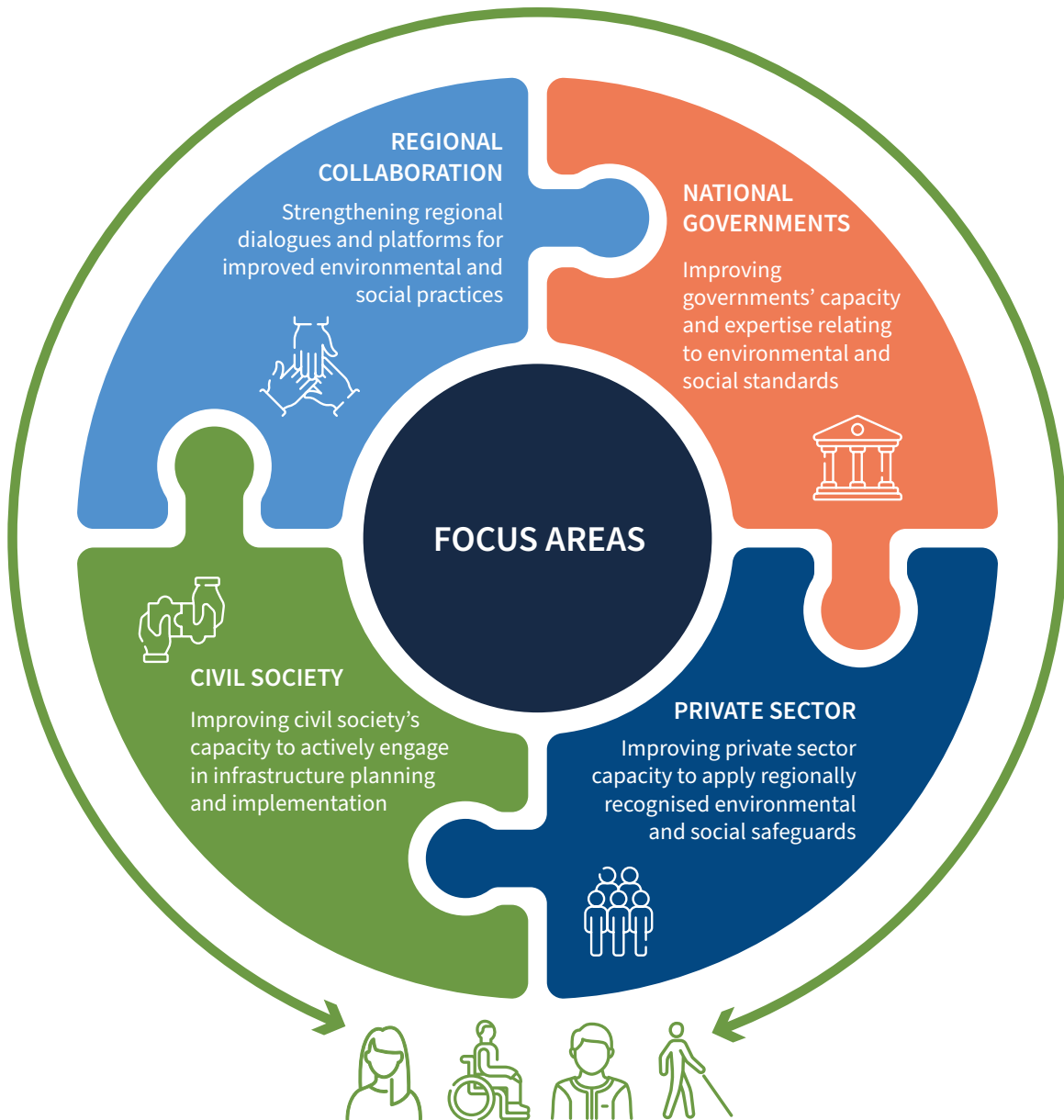
Facilitating cross-border knowledge sharing and policy harmonisation across the Mekong subregion.



PRIORITIES

EQUALITY AND SOCIAL INCLUSION

Promoting the participation of women, people with disability and other marginalised groups in infrastructure development and design.



Promoting socially inclusive infrastructure that considers the needs of women, people with disability, and other marginalised groups